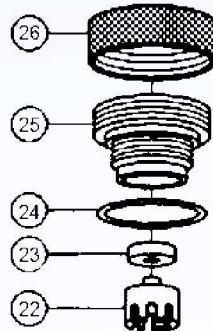




Parts Kits for Frost Free Faucets

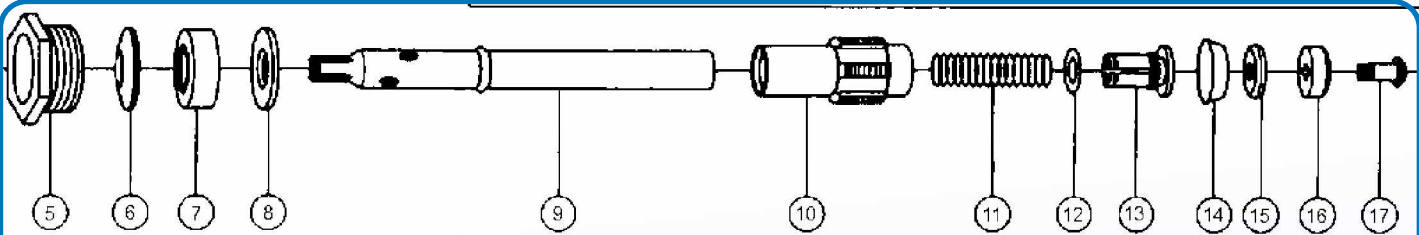
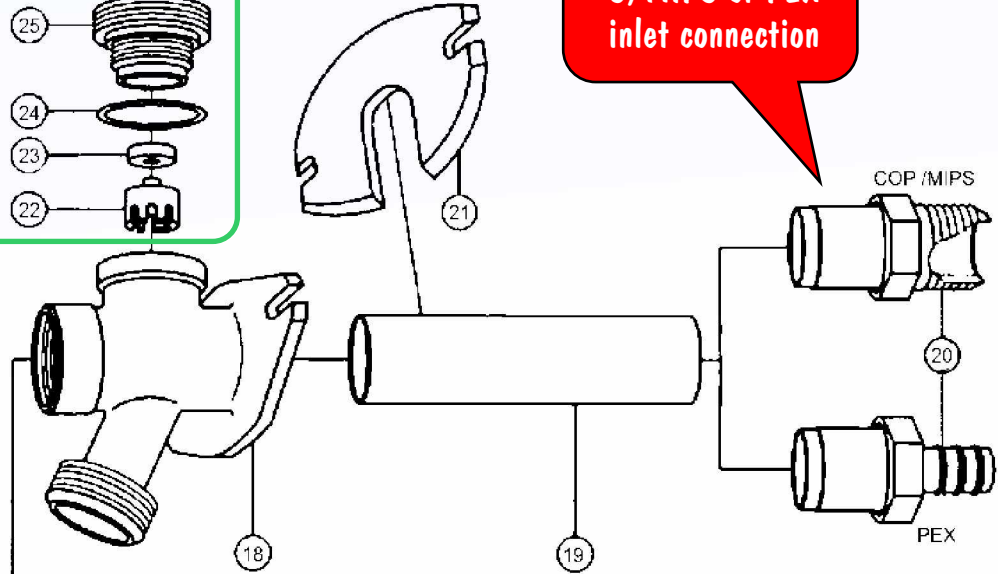
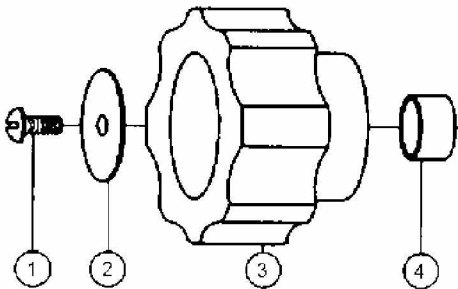
**NEW
INSTOCK**

Parts kit
'C'
Kit # 27993
Vacuum
(Fits all lengths)



Parts good for both
C/MIPS or PEX
inlet connection

Parts kit
'A'
Kit # 27994
Plastic Handle
(Fits all lengths)



Parts kit
'B'

***Not as shown*
Shipped assembled**

Original factory parts
for BMI faucets

- Kit # 27908 for 8" Long Faucet
- Kit # 27910 for 10" " "
- Kit # 27912 for 12" " "
- Kit # 27914 for 14" " "
- Kit # 27918 for 18" " "