

**BMI CANADA T-TAPE &
GENERAL SPECIALTIES PRICE LIST**

**TEF
20-1**

April 22, 2020

WHITE T-TAPE



BMI#	Size	Packing	Barcode	\$
28000	1/2 x 480 x .003 x .5g / cm ³	100/1000	777701280009	1.34
28008	1 x 520 x .003 x .35g / cm ³	25/250	777701280085	4.77

BLISTER PACKED PER QTY OF 10

PINK T-TAPE (OIL & GAS)



BMI#	Size	Packing	Barcode	\$
28001	1/2 x 540 x .004 x 1.3g / cm ³	50/500	777701280016	11.75
28002	3/4 x 540 x .004 x 1.3g / cm ³	50/500	777701280023	17.41
28003	1/2 x 1296 x .004 x 1.3g / cm ³	50/300	777701280030	24.63

BLISTER PACKED PER QTY OF 10

*** SUITABLE FOR GASOLINE, PETROLEUM OILS, PROPANE, BUTANE, NAPHTHA, BENZENE, KEROSENE AND NATURAL GAS.

YELLOW T-TAPE (OIL & GAS)



BMI#	Size	Packing	Barcode	\$
28009	1/2 x 540 x .004 x 1.3g / cm ³	50/500	777701280092	11.75
28010	3/4 x 540 x .004 x 1.3g / cm ³	50/500	777701280108	17.41

BLISTER PACKED PER QTY OF 10

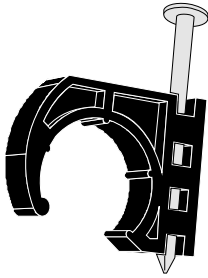
*** SUITABLE FOR GASOLINE, PETROLEUM OILS, PROPANE, BUTANE, NAPHTHA, BENZENE, KEROSENE AND NATURAL GAS.

CABLE TIES



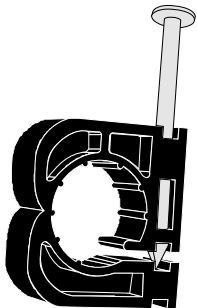
BMI#	Size	Packing	Barcode	\$
WHITE CABLE TIES				
28404	6" WHITE (100 PACK)	10/250	777701284045	4.40
28408	8" WHITE (100 PACK)	10/150	777701284083	8.22
28410	11" WHITE (100 PACK)	10/100	777701284106	12.19
28418	8" WHITE (1000 PACK)	1/15	777701284182	81.97
BLACK CABLE TIES				
28604	6" BLACK (100 PACK)	10/250	777701286049	4.40
28608	8" BLACK (100 PACK)	10/120	777701286087	8.22
28610	11" BLACK (100 PACK)	10/100	777701286100	12.19
28618	8" BLACK (1000 PACK)	1/15	777701286186	81.97

PLASTIC "J" CLIP WITH NAIL



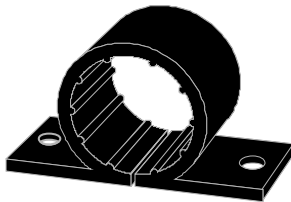
BMI#	Size	Packing	Barcode	\$
28304	1/2	100/1000	777701283048	0.17
28305	3/4	100/500	777701283055	0.28
28306	1	50/250	777701283062	0.39

PLASTIC "D" CLIP WITH NAIL



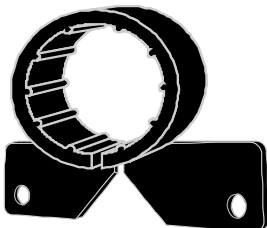
BMI#	Size	Packing	Barcode	\$
28314	1/2	100/4000	777701283147	0.23
28315	3/4	50/2000	777701283154	0.28

PLASTIC "O" CLIP WITH EARS



BMI#	Size	Packing	Barcode	\$
28324	1/2	50/2400	777701283246	0.40
28325	3/4	50/1800	777701283253	0.44
28326	1	50/1000	777701283260	0.69

PLASTIC "A" CLIP WITH EARS



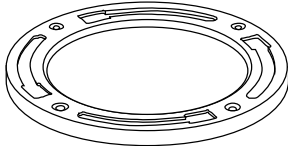
BMI#	Size	Packing	Barcode	\$
28334	1/2	50/2400	777701283345	0.40
28335	3/4	50/1800	777701283352	0.44
28336	1	50/1000	777701283369	0.69

PLASTIC 90° BEND SUPPORT WITH FLANGE



BMI#	Size	Packing	Barcode	\$
28154	1/2	20/500	777701281549	3.45

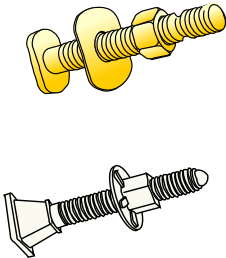
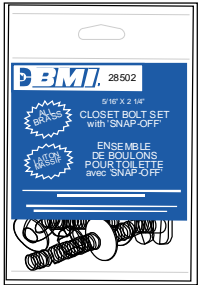
BRASS CLOSET FLANGES



BMI#	Size	Packing	Barcode	\$
28501	LIGHT	1/50	777701285011	25.73
28504	EXTRA HEAVY *	1/25	777701285042	37.20

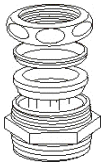
*The extra heavy brass flange is specially designed for uneven floors like cement, ceramic, etc.

SOLID BRASS & NYLON CLOSET BOLTS ASSEMBLY

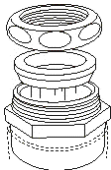


BMI#	Size	Packing	Barcode	\$
28500	5/16" x 2 1/4" (60MM)	100/400	777701285004	4.58
28502	5/16" x 2 1/4" (60MM) - Set of 2	50/200	777701285028	10.32
NYLON BOLT SET				
28506	5/16" x 2 1/2" (63.5MM) - Set of 2	50/500	777701285066	4.26

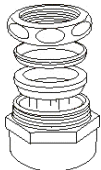
BRASS MARVEL WASTE CONNECTORS



Type "A"



Type "B"



Type "C"

BMI#	Size	Packing	Type	\$
28638	1 1/2" Mips/COP x 1 1/2"/1 1/4" SLIP	10/100	A	21.70
28646	FTG 1 1/2" x 1 1/4" SLIP	10/80	B	34.72
28648	1 1/2" Fips x 1 1/2" or 1 1/4" SLIP	10/50	C	33.02