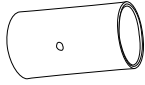
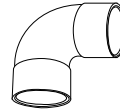


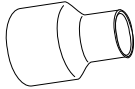
BMI CANADA "UPC" COPPER PRESSURE FITTINGS PRICE LIST



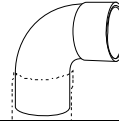
C x C WROT COPPER COUPLINGS "UPC"				
BMI #	Size	Packing	Bar Code	\$
29004	1/2"	25/800	777701290046	5.77 \$
29005	3/4"	25/250	777701290053	11.24 \$
29006	1"	10/150	777701290060	23.59 \$
29007	1 1/4"	5/100	777701290077	45.35 \$
29008	1 1/2"	5/60	777701290084	56.31 \$
29009	2"	5/40	777701290091	94.04 \$



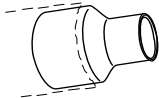
C x C WROT COPPER 90 ELBOWS "UPC"				
BMI #	Size	Packing	Bar Code	\$
29304	1/2"	25/600	777701293047	9.70 \$
29305	3/4"	25/200	777701293054	21.61 \$
29306	1"	10/100	777701293061	42.66 \$
29307	1 1/4"	5/50	777701293078	69.20 \$
29308	1 1/2"	5/35	777701293085	104.76 \$
29309	2"	5/17	777701293092	187.86 \$



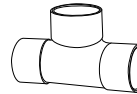
C x C WROT COPPER REDUCING COUPLINGS "UPC"				
BMI #	Size	Packing	Bar Code	\$
29023	3/4"x1/2"	25/250	777701290237	20.22 \$
29027	1"x3/4"	10/150	777701290275	39.41 \$



FTG x C WROT COPPER 90 ELBOWS "UPC"				
BMI #	Size	Packing	Bar Code	\$
29354	1/2"	25/600	777701293542	11.24 \$
29355	3/4"	25/200	777701293559	24.29 \$
29356	1"	10/100	777701293566	64.90 \$
29357	1 1/4"	5/50	777701293573	107.02 \$
29358	1 1/2"	5/35	777701293580	140.07 \$
29359	2"	5/17	777701293597	306.24 \$



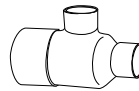
FTG x C WROT COPPER BUSHINGS "UPC"				
BMI #	Size	Packing	Bar Code	\$
29123	3/4"x1/2"	25/250	777701291234	20.09 \$



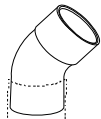
CCC WROT COPPER TEES "UPC"				
BMI #	Size	Packing	Bar Code	\$
29404	1/2"	25/375	777701294044	19.15 \$
29405	3/4"	25/150	777701294051	39.80 \$
29406	1"	10/60	777701294068	95.65 \$
29407	1 1/4"	5/35	777701294075	145.72 \$
29408	1 1/2"	5/20	777701294082	212.40 \$
29409	2"	5/10	777701294099	355.15 \$



C x C WROT COPPER 45 ELBOWS "UPC"				
BMI #	Size	Packing	Bar Code	\$
29204	1/2"	25/600	777701292040	13.78 \$
29205	3/4"	25/200	777701292057	24.13 \$
29206	1"	10/100	777701292064	61.66 \$
29207	1 1/4"	5/60	777701292071	92.10 \$
29208	1 1/2"	5/40	777701292088	110.72 \$
29209	2"	5/18	777701292095	173.57 \$



CCC WROT COPPER REDUCING TEES "UPC"				
BMI #	Size	Packing	Bar Code	\$
29429	3/4"x 3/4"x1/2"	25/150	777701294297	32.61 \$
29430	3/4"x 1/2"x3/4"	25/150	777701294303	39.47 \$
29431	3/4"x 1/2"x1/2"	25/150	777701294310	36.54 \$



FTG x C WROT COPPER 45 ELBOWS "UPC"				
BMI #	Size	Packing	Bar Code	\$
29254	1/2"	25/600	777701292545	16.49 \$
29255	3/4"	25/200	777701292552	25.63 \$



WROT COPPER CAPS "UPC"				
BMI #	Size	Packing	Bar Code	\$
29504	1/2"	25/1200	777701295041	5.18 \$
29505	3/4"	25/400	777701295058	9.75 \$
29506	1"	10/300	777701295065	23.08 \$
29507	1 1/4"	5/200	777701295072	36.29 \$
29508	1 1/2"	5/140	777701295089	53.04 \$
29509	2"	5/60	777701295096	97.69 \$



"CONTRACTOR PACKS" 1 BAG OF 25 "UPC"				
BMI #	Size	Packing	Bar Code	\$
29904	1/2" COUPLING	1/32	777701299049	125.00 \$
29924	1/2" 90 ELBOW	1/20	777701299247	210.00 \$
29934	1/2" TEE	1/12	777701299346	410.00 \$
29944	1/2" CAP	1/56	777701299445	110.00 \$



www.bmicanada.com

Head Office
3437, Grande Allee Blvd,
Boisbriand, Quebec J7H 1H5
1-800-361-1452
(450) 434-1313
1-800-561-8579
(450) 434-1314

Western Canada
1545, Britannia Road East, Unit 17-22
Mississauga, Ontario L4W 3C6
1-877-565-9559
(905) 565-9559
1-877-565-9560
(905) 564-9779

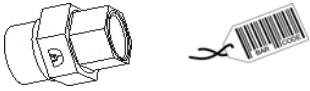


UPC
11-1

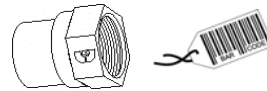
March 1, 2011



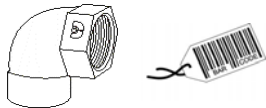
BMI CANADA "UPC" COPPER PRESSURE FITTINGS PRICE LIST



C x C BAR STOCK UNIONS "UPC"				
BMI #	Size	Packing	Bar Code	\$
29114	1/2"	25/300	777701291142	23.94 \$
29115	3/4"	25/200	777701291159	53.42 \$



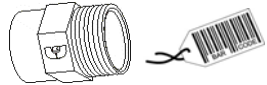
C x F BAR STOCK ADAPTERS "UPC"				
BMI #	Size	Packing	Bar Code	\$
29764	1/2"	25/300	777701297649	12.60 \$
29765	3/4"	25/250	777701297656	28.01 \$



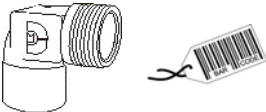
C x F CAST 90° ELBOWS "UPC"				
BMI #	Size	Packing	Bar Code	\$
29384	1/2"	25/200	777701293849	37.42 \$
29385	3/4"	25/100	777701293856	62.37 \$

C x F RED. BAR STOCK ADAPTERS "UPC"				
BMI #	Size	Packing	Bar Code	\$
29777	1/2"x3/4"	25/250	777701297779	26.71 \$
29778	1/2"x3/8"	25/500	777701297786	15.37 \$
29779	1/2"x1/4"	25/500	777701297793	12.09 \$
29781	3/4"x1/2"	25/250	777701297816	22.42 \$

C x F RED. CAST 90° ELBOWS "UPC"				
BMI #	Size	Packing	Bar Code	\$
29390	3/4" x 1/2"	25/100	777701293900	48.76 \$
29391	1/2" x 3/4"	25/200	777701293917	58.40 \$



C x M BAR STOCK ADAPTERS "UPC"				
BMI #	Size	Packing	Bar Code	\$
29864	1/2"	25/400	777701298646	13.49 \$
29865	3/4"	25/250	777701298653	19.90 \$

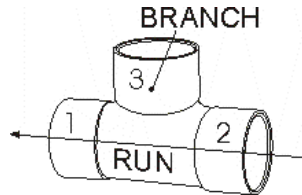


C x M CAST 90° ELBOWS "UPC"				
BMI #	Size	Packing	Bar Code	\$
29364	1/2"	25/300	777701293641	37.42 \$
29365	3/4"	25/150	777701293658	74.84 \$

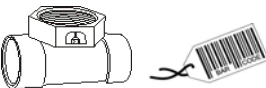
C x M RED. BAR STOCK ADAPTERS "UPC"				
BMI #	Size	Packing	Bar Code	\$
29877	1/2"x3/4"	25/300	777701298776	25.45 \$
29878	1/2"x3/8"	25/300	777701298783	9.82 \$
29879	1/2"x1/4"	25/250	777701298790	9.07 \$
29881	3/4"x1/2"	25/250	777701298813	25.95 \$



C x F CAST 90° DROPEARS "UPC"				
BMI #	Size	Packing	Bar Code	\$
29399	1/2"	25/200	777701293993	51.03 \$



BRANCH = Single outlet



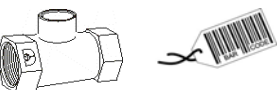
C x C x F CAST TEES "UPC"				
BMI #	Size	Packing	Bar Code	\$
29591	1/2"	25/300	777701295911	43.27 \$

CxF = Copper end to Female threaded end
CCF = Copper x Copper x Female threaded
CFC = Copper x Female threaded x Copper
CxM = Copper end to Male threaded end



C x F x C CAST TEES "UPC"				
BMI #	Size	Packing	Bar Code	\$
29595	1/2"	25/200	777701295959	48.14 \$

FFC = Female threaded x Female threaded x Copper
RED. = Reducing



F x F x C CAST TEES "UPC"				
BMI #	Size	Packing	Bar Code	\$
29586	3/4"	25/100	777701295867	74.84 \$
F x F x C RED. CAST TEES "UPC"				
29587	3/4"x3/4"/1/2"	25/100	777701295874	70.98 \$
29589	3/4"x1/2"/1/2"	25/200	777701295898	66.91 \$