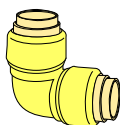


RACCORDS 'PUSH FIT' EN LAITON RÉGULIER

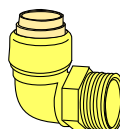
**PFT
10-3**

15 décembre 2010 (c)

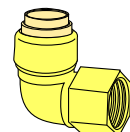
NON CONÇU POUR L'EAU POTABLE



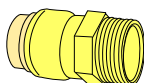
COUDES 90° "PUSH FIT"				
32306	1	2/60	777701323065	32.86
32323	3/4 x 1/2	5/100	777701323232	16.50



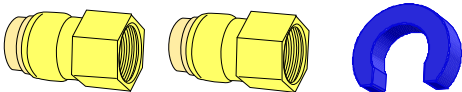
COUDES 90° "PUSH FIT" x MIPS				
32364	1/2	10/150	777701323645	11.00
32365	3/4	5/100	777701323652	16.00
32366	1	2/50	777701323669	22.00



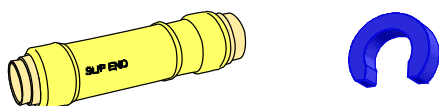
COUDES 90° "PUSH FIT" x FIPS				
32385	3/4	5/100	777701323850	15.50
32386	1	2/50	777701323867	21.00



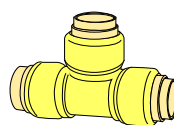
ADAPTATEURS "PUSH FIT" x MIPS				
32806	1	2/64	777701328060	21.24
32807	1 1/4	2/30	777701328077	77.00
32808	1 1/2	1/25	777701328084	105.00
32817	1/2 x 3/4	5/180	777701328176	12.10



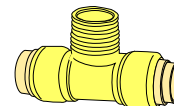
ENSEMBLE "PUSH FIT" x FIPS (Chauffe-eau)				
32724	1/2 x 3/4	1/1	777701327247	23.25
32725	3/4 x 3/4	1/1	777701327254	23.50



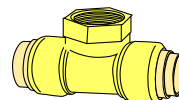
MANCHONS COULISSANT "PUSH FIT"				
32015	3/4	5/30	777701320156	35.74
32016	1	5/30	777701320163	57.25



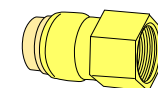
TÉS "PUSH FIT"				
#BMI	Taille	Emballage	Code à barres	\$
32405	3/4	5/60	777701324055	25.25
32406	1	2/30	777701324062	44.09
32419	1/2 x 1/2 x 1	2/40	777701324192	28.41
32420	1/2 x 1/2 x 3/4	5/60	777701324208	22.19
32430	3/4 x 1/2 x 3/4	5/60	777701324307	25.61
32431	3/4 x 1/2 x 1/2	5/60	777701324314	24.21
32438	1 x 1 x 3/4	2/30	777701324383	35.00



TÉS "PUSH FIT" x MIPS				
32574	1/2	10/120	777701325748	15.78
32575	3/4	5/60	777701325755	28.73



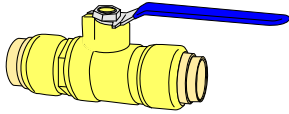
TÉS "PUSH FIT" x FIPS				
32591	1/2	10/100	777701325915	16.67
32592	3/4	5/50	777701325922	28.91



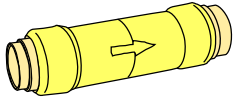
ADAPTATEURS "PUSH FIT" x FIPS				
32706	1	2/60	777701327063	19.49
32717	1/2 x 3/4	5/180	777701327179	11.57



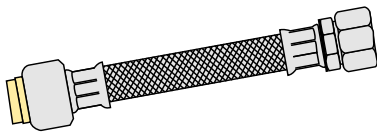
CAPUCHONS "PUSH FIT"				
32506	1	2/140	777701325069	17.17

NON CONÇU POUR L'EAU POTABLE**VALVES À BILLE "PUSH FIT"**

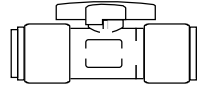
#BMI	Taille	Emballage	Code à barres	\$
32606	1	2/30	777701326066	67.07

**VALVES DE RETENUE "PUSH FIT"**

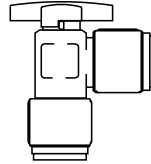
32656	1	2/30	777701326561	50.97
-------	---	------	--------------	-------

**TUBE FLEXIBLE "PUSH FIT" x FIPS**

32212	3/4 x 12"	5/25	777701322129	25.74
32215	3/4 x 15"	5/25	777701322150	27.16
32224	3/4 x 24"	5/25	777701322242	30.06

**VALVES À BILLE DROITE "PUSH FIT" 1/4 TOUR CHROME**

#BMI	Taille	Emballage	Code à barres	\$
32904	1/2 x 1/2	10/100	777701329043	17.99

**VALVES À BILLE À ANGLE (90°) "PUSH FIT" 1/4 TOUR CHROME**

32909	1/2 x 1/2	10/100	777701329098	18.56
-------	-----------	--------	--------------	-------