

BMI CANADA T-TAPE & GENERAL SPECIALTIES PRICE LIST

TEF 21-3

October 1, 2021

WHITE T-TAPE



BMI#	Size	Packing	Barcode	\$
28000	1/2 x 480 x .003 x .5g / cm ³	100/1000	777701280009	1.55
28008	1 x 520 x .003 x .35g / cm ³	25/250	777701280085	5.50

BLISTER PACKED PER QTY OF 10

PINK T-TAPE (OIL & GAS)



BMI#	Size	Packing	Barcode	\$
28001	1/2 x 540 x .004 x 1.3g / cm ³	50/500	777701280016	13.55
28002	3/4 x 540 x .004 x 1.3g / cm ³	50/500	777701280023	20.08
28003	1/2 x 1296 x .004 x 1.3g / cm ³	50/300	777701280030	28.41

BLISTER PACKED PER QTY OF 10

*** SUITABLE FOR GASOLINE, PETROLEUM OILS, PROPANE, BUTANE, NAPHTHA, BENZENE, KEROSENE AND NATURAL GAS.

YELLOW T-TAPE (OIL & GAS)



BMI#	Size	Packing	Barcode	\$
28009	1/2 x 540 x .004 x 1.3g / cm ³	50/500	777701280092	13.55
28010	3/4 x 540 x .004 x 1.3g / cm ³	50/500	777701280108	20.08

BLISTER PACKED PER QTY OF 10

*** SUITABLE FOR GASOLINE, PETROLEUM OILS, PROPANE, BUTANE, NAPHTHA, BENZENE, KEROSENE AND NATURAL GAS.

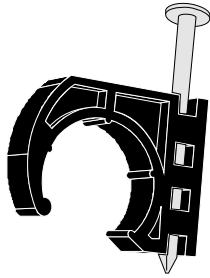
CABLE TIES

WHILE QUANTITIES LAST - FINAL SALE



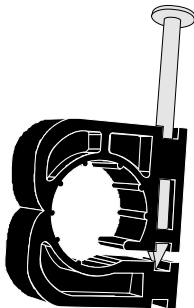
BMI#	Size	Packing	Barcode	\$
WHITE CABLE TIES				
28404	6" WHITE (100 PACK)	10/250	777701284045	4.93
-	11" WHITE (100 PACK)	-	-	-
-	8" WHITE (1000 PACK)	-	-	-
BLACK CABLE TIES				
28604	6" BLACK (100 PACK)	10/250	777701286049	4.93
28610	11" BLACK (100 PACK)	10/100	777701286100	13.65
28618	8" BLACK (1000 PACK)	1/15	777701286186	91.81

PLASTIC "J" CLIP WITH NAIL



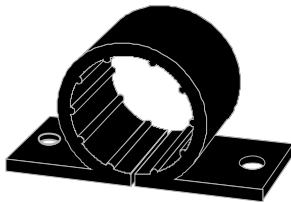
BMI#	Size	Packing	Barcode	\$
28304	1/2	100/1000	777701283048	0.20
28305	3/4	100/500	777701283055	0.32
28306	1	50/250	777701283062	0.45

PLASTIC "D" CLIP WITH NAIL



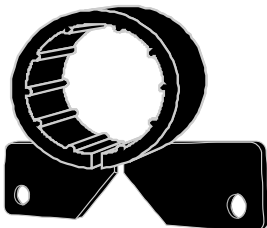
BMI#	Size	Packing	Barcode	\$
28314	1/2	100/4000	777701283147	0.27
28315	3/4	50/2000	777701283154	0.32

PLASTIC "O" CLIP WITH EARS



BMI#	Size	Packing	Barcode	\$
28324	1/2	50/2400	777701283246	0.46
28325	3/4	50/1800	777701283253	0.50
28326	1	50/1000	777701283260	0.80

PLASTIC "A" CLIP WITH EARS



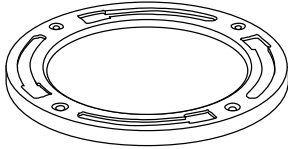
BMI#	Size	Packing	Barcode	\$
28334	1/2	50/2400	777701283345	0.46
28335	3/4	50/1800	777701283352	0.50
28336	1	50/1000	777701283369	0.80

PLASTIC 90° BEND SUPPORT WITH FLANGE



BMI#	Size	Packing	Barcode	\$
28154	1/2	20/500	777701281549	3.98

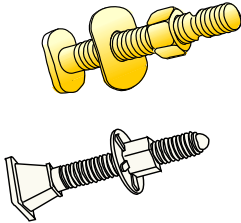
BRASS CLOSET FLANGES



BMI#	Size	Packing	Barcode	\$
28501	LIGHT	1/50	777701285011	33.00
28504	EXTRA HEAVY *	1/25	777701285042	47.70

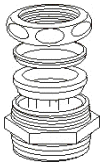
*The extra heavy brass flange is specially designed for uneven floors like cement, ceramic, etc.

SOLID BRASS & NYLON CLOSET BOLTS ASSEMBLY

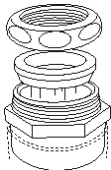


BMI#	Size	Packing	Barcode	\$
28500	5/16" x 2 1/4" (60MM)	100/400	777701285004	5.88
28502	5/16" x 2 1/4" (60MM) - Set of 2	50/200	777701285028	13.24
NYLON BOLT SET				
28506	5/16" x 2 1/2" (63.5MM) - Set of 2	50/500	777701285066	5.47

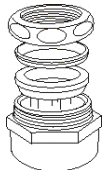
BRASS MARVEL WASTE CONNECTORS



Type "A"



Type "B"



Type "C"

BMI#	Size	Packing	Type	\$
28638	1 1/2" Mips/COP x 1 1/2"/1 1/4" SLIP	10/100	A	27.83
28646	FTG 1 1/2" x 1 1/4" SLIP	10/80	B	44.52
28648	1 1/2" Fips x 1 1/2" or 1 1/4" SLIP	10/50	C	42.34