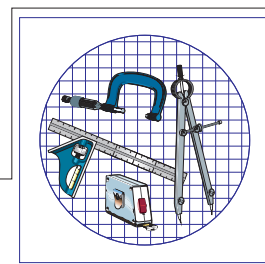




Head Office  
3437, Grande Allee Blvd.  
Boisbriand, Quebec J7H 1H5  
1-800-361-1452  
(450) 434-1313  
1-800-561-8579  
(450) 434-1314

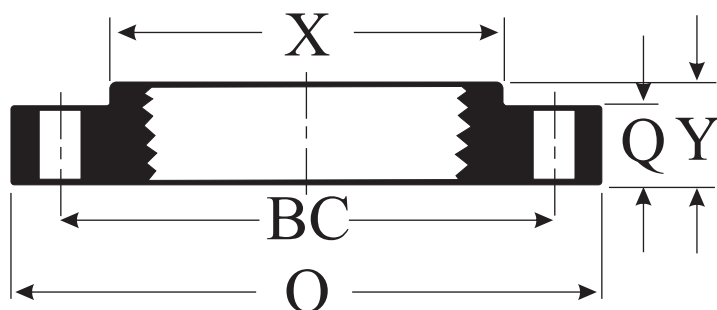
Branch  
1545, Britannia Road East, Unit 17-22  
Mississauga, Ontario L4W 3C6  
1-877-565-9559  
(905) 565-9559  
1-877-565-9560  
(905) 564-9779



## TECHNICAL SPECIFICATIONS

### #125 Cast Iron Companion Flange (Black & Galvanized)

Part # Black	Part # Galv.	Thread Size	BC	O	Q	X	Y	Num. Bolt Holes	Bolt Holes Size	Wght Lbs
16606	16806	1	3.12	4 1/4	7/16	1 15/16	11/16	4	0.62	1.75
16607	16807	1 1/4	3.50	4 5/8	1/2	2 5/16	13/16	4	0.62	2.00
16608	16808	1 1/2	3.88	5	9/16	2 9/16	7/8	4	0.62	2.25
16609	16809	2	4.75	6	5/8	3 1/16	1	4	0.75	4.00
16610	16810	2 1/2	5.50	7	11/16	3 9/16	1 1/8	4	0.75	6.00
16611	16811	3	6.00	7 1/2	3/4	4 1/4	1 3/16	4	0.75	7.63
16612	16812	4	7.50	9	15/16	5 5/16	1 5/16	8	0.75	11.75
16614	16814	6	9.50	11	1	7 9/16	1 9/16	8	0.88	16.50
16616	16816	8	11.75	13 1/2	1 1/8	9 11/16	1 3/4	8	0.88	26.00



Flanges:  
**ANSI/ASME B1.16.5**

Threads:  
**ANSI/ASME B1.20.1**

### #125 Reducing Cast Iron Companion Flange (Black & Galvanized)

Part # Black	Part # Galv.	Thread Size	BC	O	Q	X	Y	Num. Bolt Holes	Bolt Holes Size	Wght Lbs
16650	16850	1	3.88	5	9/16	1 15/16	11/16	4	0.62	2.75
16655	16855	1 1/2	4.75	6	5/8	2 9/16	7/8	4	0.75	4.50
16656	16856	1 1/2	6.00	7 1/2	3/4	2 9/16	7/8	4	0.75	8.75
16659	16859	2	5.50	7	11/16	3 1/16	1	4	0.75	6.75
16660	16860	2	6.00	7 1/2	3/4	3 1/16	1	4	0.75	8.50
16661	16861	2	7.50	9	15/16	3 1/16	1	8	0.75	14.00
16662	16862	2	9.50	11	1	3 1/16	1 1/16	8	0.88	26.00
16664	16864	2 1/2	6.00	7 1/2	3/4	3 9/16	1 1/8	4	0.75	8.00
16665	16865	2 1/2	7.50	9	15/16	3 9/16	1 1/8	8	0.75	13.50
16666	16866	2 1/2	9.50	11	1	3 9/16	1 1/8	8	0.88	25.00
16667	16867	3	7.50	9	15/16	4 1/4	1 3/16	8	0.75	12.75
16669	16869	3	9.50	11	1	4 1/4	1 3/16	8	0.88	23.00
16672	16872	4	9.50	11	1	5 5/16	1 5/16	8	0.88	21.00
16673	16873	4	11.75	13 1/2	1 1/8	5 5/16	1 5/16	8	0.88	37.00