

# CxF DIELECTRIC UNIONS

Working Pressure & Temperature:

Max.: 82 °C (180 °F) ~ 250 psi (17.24 bar)

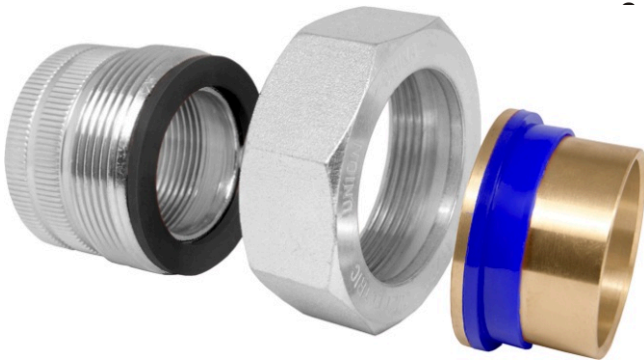
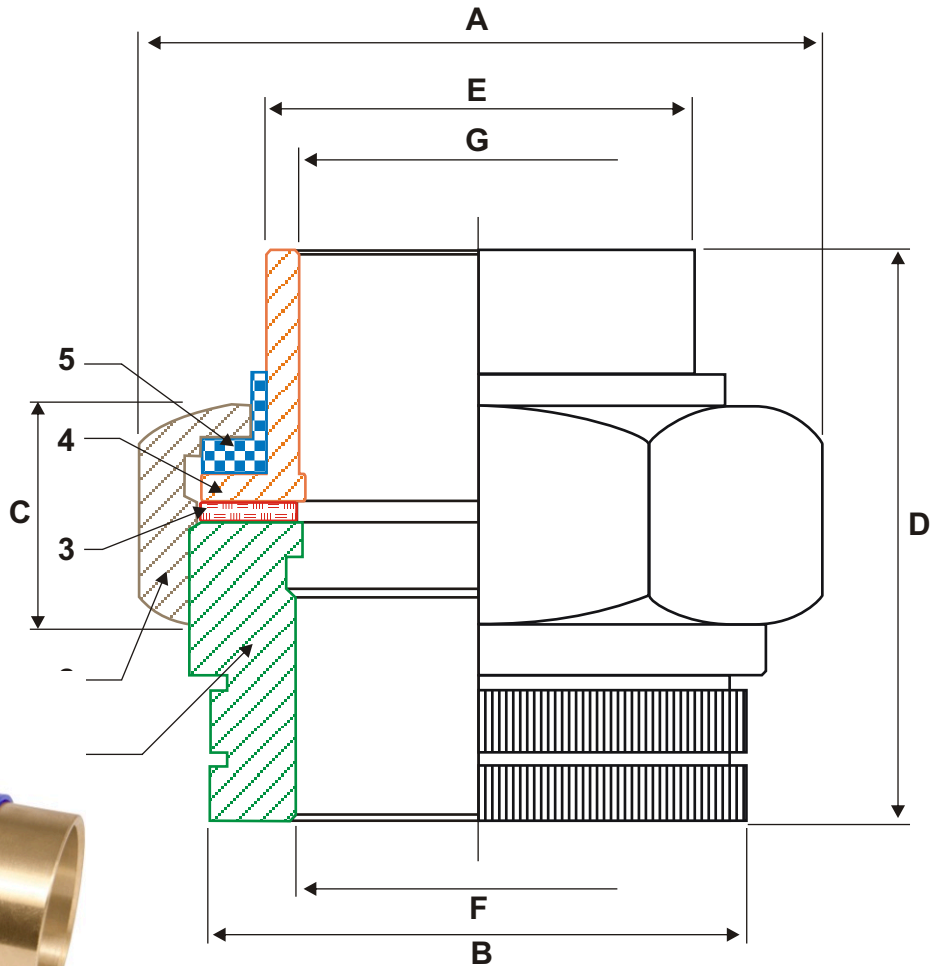
Standards for parts:

Steel: ASTM A108

Brass: ASTM B16

Zinc Plated: ASTM B633

BMI#	Size	mm							G
07444	1/2"	41.30	26.40	18.28	47.00	20.80	1/2" NPT	16.00	+ 0.03 -0.07
07445	3/4"	47.00	32.00	18.28	51.50	27.17	3/4" NPT	22.30	+ 0.08 -0.02
07446	1"	53.40	39.00	18.28	57.50	33.30	1" NPT	28.70	+ 0.05 -0.05
07447	1 1/4"	65.00	47.20	21.50	64.00	39.87	1 1/4" NPT	35.00	+ 0.11 -0.01
07448	1 1/2"	75.00	54.70	24.60	64.30	46.45	1 1/2" NPT	41.40	+ 0.09 -0.06
07449	2"	95.30	69.40	27.00	72.50	60.45	2" NPT	54.10	+ 0.09 -0.06



#	PART	MATERIAL
1	THREADED CONNECTOR	ZINC PLATED STEEL
2	HEX. NUT	ZINC PLATED STEEL
3	GASKET	EPDM RUBBER
4	SOLDER CONNECTOR	LEAD FREE BRASS
5	INSULATOR	PLASTIC