

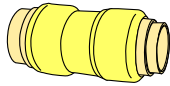


**BMI CANADA LEAD FREE
PUSH-FIT FITTING PRICE LIST**

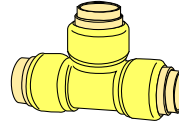


**PFT
22-1**

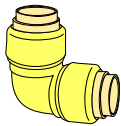
February 21, 2022



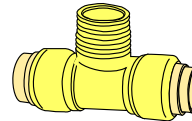
PUSH FIT COUPLINGS				
BMI#	Size	Packing	Barcode	\$
38004	1/2	10/200	777701380044	19.14
38005	3/4	5/100	777701380051	30.43
38006	1	2/60	777701380068	50.50
38007	1 1/4	1/10	777701380075	169.96
38008	1 1/2	1/6	777701380082	252.07
38009	2	1/4	777701380099	365.86
38023	3/4 x 1/2	5/120	777701380235	25.73
38027	1 x 3/4	2/80	777701380273	48.62
38031	1 1/4 x 1	1/10	777701380310	108.02
38035	1 1/2 x 1 1/4	1/6	777701380358	201.65
38040	2 x 1 1/2	1/5	777701380402	324.09



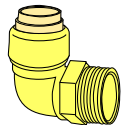
PUSH FIT TEES				
BMI#	Size	Packing	Barcode	\$
38404	1/2	10/120	777701384042	34.65
38405	3/4	5/60	777701384059	59.90
38406	1	2/30	777701384066	106.62
38407	1 1/4	1/6	777701384073	311.48
38408	1 1/2	1/3	777701384080	535.12
38409	2	1/2	777701384097	744.68
38419	1/2 x 1/2x 1	2/40	777701384196	57.65
38420	1/2 x 1/2x 3/4	5/60	777701384202	45.02
38429	3/4 x 3/4 x 1/2	5/60	777701384295	55.87
38430	3/4 x 1/2 x 3/4	5/60	777701384301	51.95
38431	3/4 x 1/2 x 1/2	5/60	777701384318	49.10
38438	1 x 1 x 3/4	2/30	777701384387	89.12



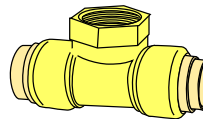
PUSH FIT 90° ELBOWS				
BMI#	Size	Packing	Barcode	\$
38304	1/2	10/150	777701383045	25.28
38305	3/4	5/100	777701383052	40.92
38306	1	2/60	777701383069	74.00
38307	1 1/4	1/8	777701383076	240.20
38308	1 1/2	1/5	777701383083	350.01
38309	2	1/3	777701383090	581.56
38323	3/4 x 1/2	5/100	777701383236	33.50



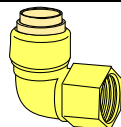
PUSH FIT x MIPS TEES				
BMI#	Size	Packing	Barcode	\$
38574	1/2	10/120	777701385742	32.03
38575	3/4	5/60	777701385759	58.27



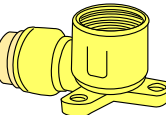
PUSH FIT x MIPS 90° ELBOWS				
BMI#	Size	Packing	Barcode	\$
38364	1/2	10/150	777701383649	26.11
38365	3/4	5/100	777701383656	43.52
38366	1	2/50	777701383663	69.63



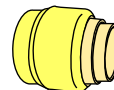
PUSH FIT x FIPS TEES				
BMI#	Size	Packing	Barcode	\$
38591	1/2	10/100	777701385919	33.83
38592	3/4	5/50	777701385926	58.64



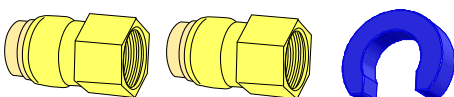
PUSH FIT x FIPS 90° ELBOWS				
BMI#	Size	Packing	Barcode	\$
38384	1/2	10/150	777701383847	26.98
38385	3/4	5/100	777701383854	42.65
38386	1	2/50	777701383861	66.15



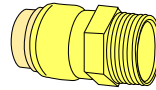
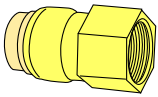
1/2" PUSH FIT x FIPS 90° DROPEARS				
BMI#	Size	Packing	Barcode	\$
38399	1/2	10/100	777701383991	34.55



PUSH FIT CAPS				
BMI#	Size	Packing	Barcode	\$
38504	1/2	10/300	777701385049	13.52
38505	3/4	5/200	777701385056	18.77
38506	1	2/140	777701385063	34.84
38507	1 1/4	1/20	777701385070	90.46
38508	1 1/2	1/12	777701385087	142.82
38509	2	1/8	777701385094	229.37

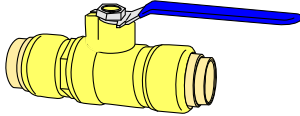


PUSH FIT x FIPS WATER HEATER KIT				
BMI#	Size	Packing	Barcode	\$
38724	1/2 x 3/4	1/1	777701387241	47.17
38725	3/4 x 3/4	2/2	777701387258	47.65



PUSH FIT x FIPS ADAPTERS				
BMI#	Size	Packing	Barcode	\$
38704	1/2	10/200	777701387043	20.72
38705	3/4	5/80	777701387050	32.21
38706	1	2/60	777701387067	47.36
38707	1 1/4	1/10	777701387074	135.27
38708	1 1/2	1/8	777701387081	182.13
38709	2	1/6	777701387098	268.14
38717	1/2 x 3/4	5/180	777701387173	23.46

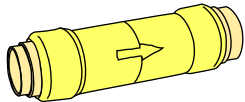
PUSH FIT x MIPS ADAPTERS				
BMI#	Size	Packing	Barcode	\$
38804	1/2	10/150	777701388040	17.25
38805	3/4	5/100	777701388057	23.39
38806	1	2/64	777701388064	43.10
38807	1 1/4	2/10	777701388071	135.27
38808	1 1/2	1/8	777701388088	182.13
38809	2	1/6	777701388095	268.14
38817	1/2 x 3/4	5/180	777701388170	24.53



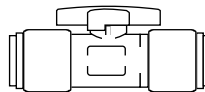
PUSH FIT BALL VALVES				
BMI#	Size	Packing	Barcode	\$
38604	1/2	10/80	777701386046	59.53
38605	3/4	5/45	777701386053	82.15
38606	1	2/30	777701386060	162.24



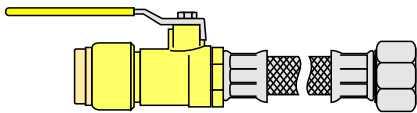
DISCONNECT TOOLS				
BMI#	Size	Packing	Barcode	\$
38104	1/2	50/900	777701381041	1.32
38105	3/4	25/500	777701381058	1.64
38106	1	10/400	777701381065	2.09
38107	1 1/4	1/80	777701381072	52.93
38108	1 1/2	1/48	777701381089	79.57
38109	2	1/30	777701381096	106.23



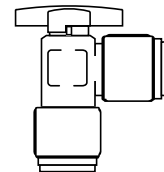
PUSH FIT CHECK VALVES				
BMI#	Size	Packing	Barcode	\$
38654	1/2	10/50	777701386541	32.99
38655	3/4	5/30	777701386558	68.04
38656	1	2/30	777701386565	103.41



PUSH FIT CHROME PLATED STRAIGHT VALVE				
BMI#	Size	Packing	Barcode	\$
38904	1/2 x 1/2	10/100	777701389047	54.31



PUSH FIT x FIPS BRAIDED FLEXIBLE TUBE				
BMI#	Size	Packing	Barcode	\$
38612	3/4 x 12	5/25	777701386121	130.54
38615	3/4 x 15	5/25	777701386152	136.63
38618	3/4 x 18	5/25	777701386183	139.24
38624	3/4 x 24	5/25	777701386244	144.47
38632	1/2 x 3/4 x 12"	5/25	777701386329	107.92
38635	1/2 x 3/4 x 15"	5/25	777701386350	112.27
38638	1/2 x 3/4 x 18"	5/25	777701386381	114.87
38644	1/2 x 3/4 x 24"	5/25	777701386442	125.31

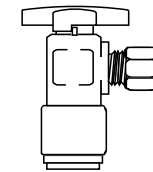


PUSH FIT CHROME PLATED ANGLE VALVE				
BMI#	Size	Packing	Barcode	\$
38909	1/2 x 1/2	10/100	777701389092	55.01

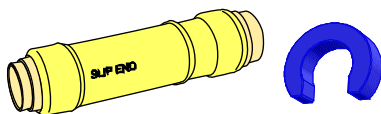


PUSH FIT x FIPS BRAIDED FLEXIBLE TUBE				
BMI#	Size	Packing	Barcode	\$
38212	3/4 x 12"	5/25	777701382123	78.34
38215	3/4 x 15"	5/25	777701382154	83.55
38218	3/4 x 18"	5/25	777701382185	87.02
38224	3/4 x 24"	5/25	777701382246	90.51

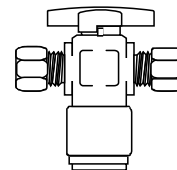
PUSH FIT CHROME PLATED STRAIGHT VALVE				
BMI#	Size	Packing	Barcode	\$
38984	1/2 x 3/8 (O.D.)	10/100	777701389849	38.92



PUSH FIT CHROME PLATED ANGLE VALVE				
BMI#	Size	Packing	Barcode	\$
38989	1/2 x 3/8 (O.D.)	10/100	777701389894	40.21



LONG REPAIR COUPLINGS				
BMI#	Size	Packing	Barcode	\$
38014	1/2	10/50	777701380143	41.77
38015	3/4	5/30	777701380150	68.75
38016	1	5/25	777701380167	107.92



PUSH FIT CHROME PLATED ANGLE VALVE				
BMI#	Size	Packing	Barcode	\$
38919	1/2 x 3/8 x 3/8 (O.D.)	10/100	777701389191	60.57