

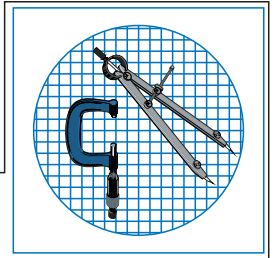


Montreal ~ Toronto ~ Vancouver ~ Cincinnati

www.bmicanada.com

☎ 1-800-361-1452

☎ 1-800-561-8579

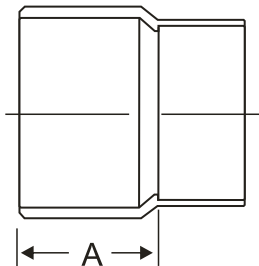
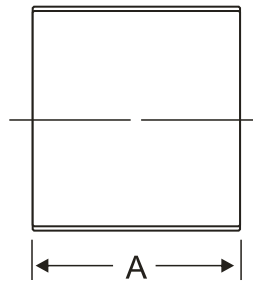
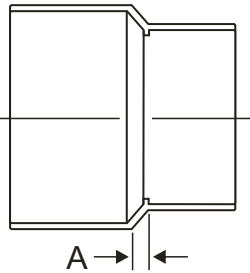
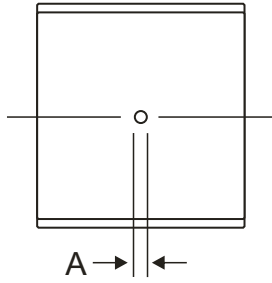


TECHNICAL INFORMATION

WROUGHT COPPER & CAST COPPER ALLOY DWV FITTINGS



WROUGHT COPPER DWV

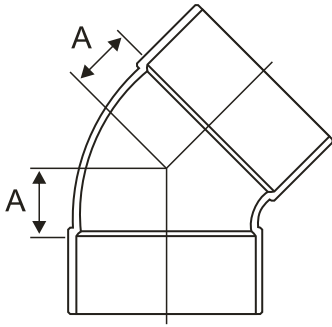


Cx C COUPLING WROUGHT DWV		
BMI#	SIZE	A
22007	1 1/4	2.5
22008	1 1/2	3.2
22009	2	3.2
22011	3	4.8
22012	4	6.4
22035	1 1/2x1 1/4	9.5
22040	2x1 1/2	14.3
22041	2x1 1/4	18.3
22052	3x2	27.0
22053	3x1 1/2	31.8
22056	4x3	20.6
22058	4x2	38.8

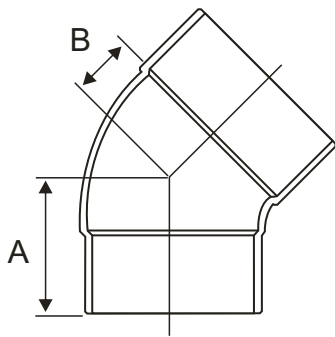
Cx C REPAIR CPLG NO STOP WROUGHT DWV		
BMI#	SIZE	A
22078	1 1/2	30.6
22079	2	34.1
22081	3	38.1

FTGxC BUSHING WROUGHT DWV		
BMI#	SIZE	A
22135	1 1/2x1 1/4	23.0
22140	2x1 1/2	28.0
22141	2x1 1/4	32.5
22152	3x2	49.2
22153	3x1 1/2	50.0
22154	3x1 1/4	51.5

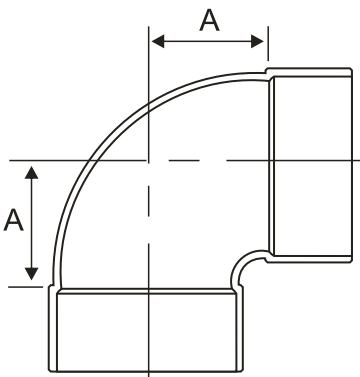
WROUGHT COPPER DWV



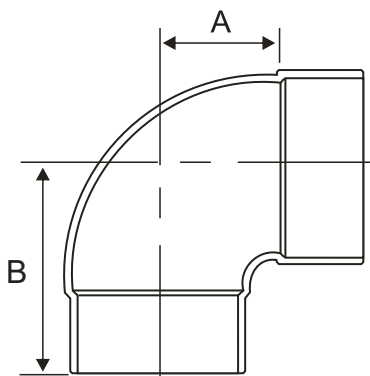
CxC 45° ELBOW WROUGHT DWV		
BMI#	SIZE	A
22217	1 1/4	12.7
22218	1 1/2	14.3
22219	2	20.6
22221	3	30.2
22212	4	40.0



FTGxC 45° ELBOW WROUGHT DWV			
BMI#	SIZE	A	B
22257	1 1/4	27.4	12.7
22258	1 1/2	29.4	14.3
22259	2	38.1	20.6
22261	3	48.4	30.2
22262	4	69.0	40.0

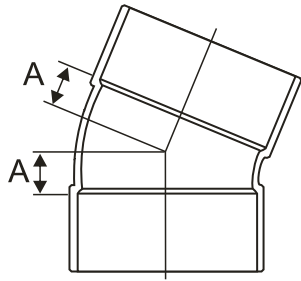


CxC 90° ELBOW WROUGHT DWV		
BMI#	SIZE	A
22317	1 1/4	30.2
22318	1 1/2	36.5
22319	2	49.2
22361	3	74.6
22312	4	96.8

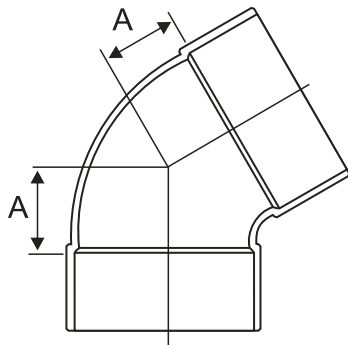


FTGxC 90° ELBOW WROUGHT DWV			
BMI#	SIZE	A	B
22357	1 1/4	30.2	44.5
22358	1 1/2	36.5	52.4
22359	2	49.2	66.7
22361	3	74.6	95.3
22362	4	96.8	125.0

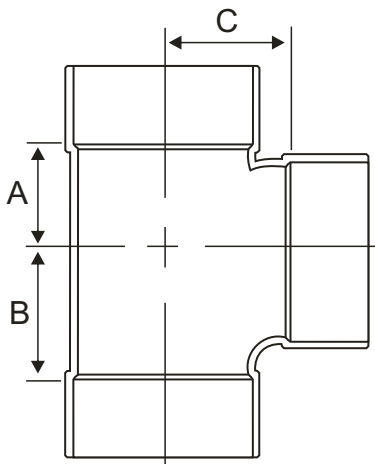
WROUGHT COPPER DWV



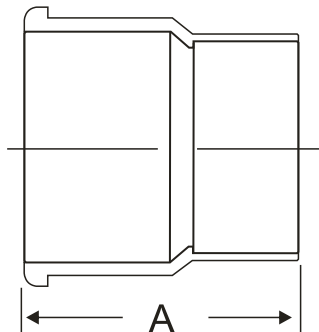
Cx \times C 22 1/2 $^{\circ}$ ELBOW WROUGHT DWV		
BMI#	SIZE	A
22348	1 1/2	6.4
22349	2	8.7
22351	3	13.5



Cx \times C 60 $^{\circ}$ ELBOW WROUGHT DWV		
BMI#	SIZE	A
22368	1 1/2	20.6
22369	2	28.5
22361	3	40.5

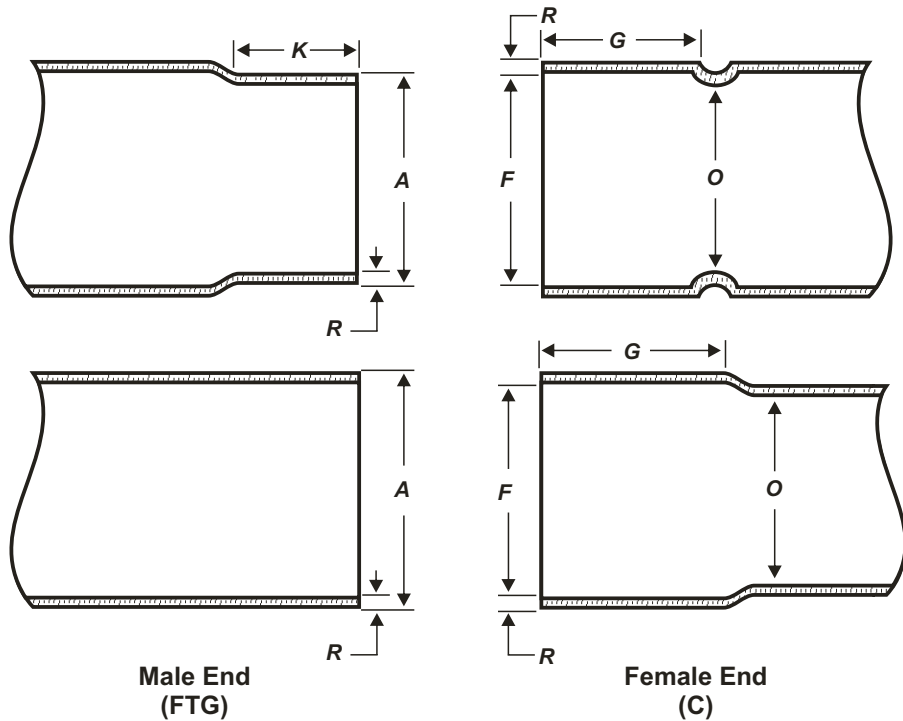


Cx \times C \times C TY WROUGHT DWV				
BMI#	SIZE	A	B	C
22407	1 1/4	20.6	28.6	28.6
22408	1 1/2	23.8	34.9	34.9
22409	2	27.0	47.6	44.5
22411	3	44.5	73.0	66.7
22419	2 \times 2 \times 1 1/2	22.2	33.3	39.7
22420	2 \times 2 \times 1 1/4	19.0	28.6	38.1
22421	2 \times 1 1/2 \times 2	35.0	47.6	47.6



CxSPIGOT FERRULE ADP DWV WROUGHT		
BMI#	SIZE	A
22845	2	79.4

WROUGHT COPPER DWV



ASME B16.29 Wrought Copper DWV Fittings								
DIMENSIONS OF THE SOLDER JOINT ENDS - DWV								
Nominal Tube Size	Male End			Female End			Metal Thickness R Note (2) Min.	Inside Diameter of Fitting O Note (3) Min.
	Outside Diameter A		Length K Note (1)	Inside Diameter F		Depth G Note (1)		
	Min.	Max.	Min.	Min.	Max.	Min.		
1 1/4	34.85	37.98	14.22	35.00	35.10	12.70	1.02	32.77
1 1/2	41.17	41.33	15.75	41.35	41.83	14.22	1.07	38.86
2	53.87	54.03	17.53	54.05	54.18	15.75	1.07	51.05
3	79.27	79.43	20.57	79.45	79.53	19.05	1.14	75.69
4	104.67	104.83	26.92	104.85	104.98	25.40	1.47	99.82

General note: Dimensions in mm

Notes:

- (1) K dimensions of 11.18, 12.7 and 14.22 mm, and G dimensions of 9.65, 11.18 and 12.7 mm respectively for sizes 1 1/4, 1 1/2 and 2 are sound and acceptable from an engineering standpoint. However, the cup depths specified provide greater latitude in making accurate installations.
- (2) R dimension is based on DWV tubing which is intended for aboveground use.
- (3) Inside diameter of fitting is based on Type 'M' copper water tube (ASTM B 88).

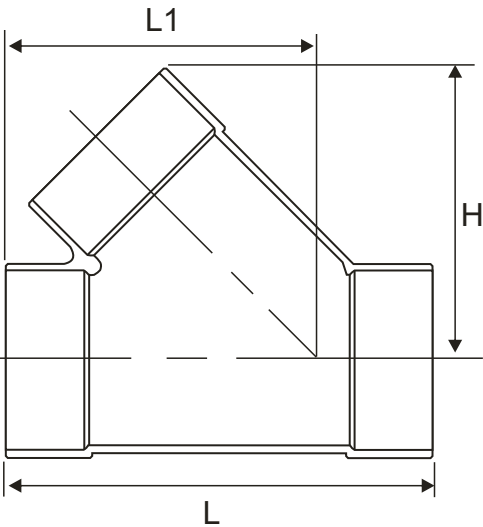
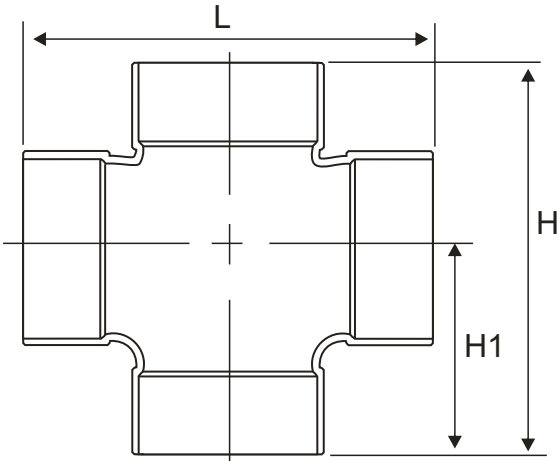
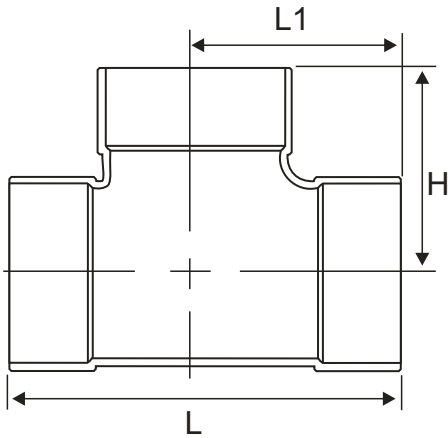
Complies with:

Materials: ASTM/ASME B42 C12200 Cu99.9%

Dimensions: ASTM/ASME B16.29

Threads: ASTM/ASME B1.20.1

CAST COPPER ALLOY DWV



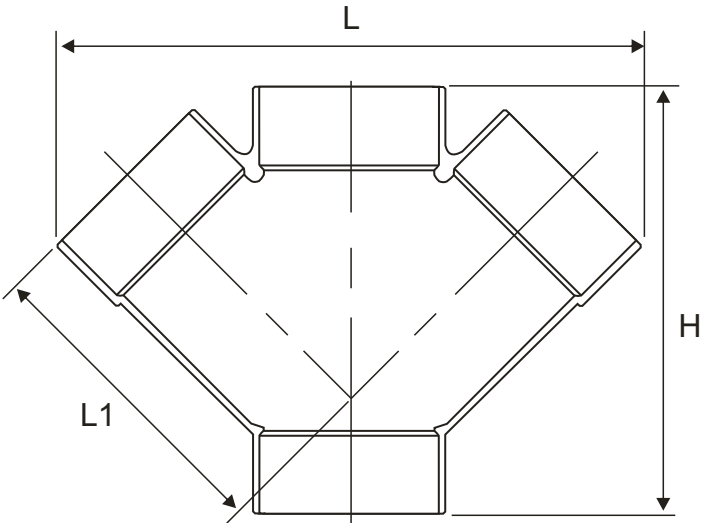
CxCxC TY CAST DWV				
BMI#	SIZE	L	H	L1
22414	1 1/2 x 1 1/4 x 1 1/2	80.5	49.0	33.8
22415	1 1/2 x 1 1/4 x 1 1/4	80.5	49.0	29.5
22416	1 1/2 x 1 1/2 x 1 1/4	78.5	47.0	30.0
22422	2 x 1 1/2 x 1 1/2	84.0	50.8	34.1
22423	2 x 1 1/2 x 1 1/4	86.0	55.0	52.0
22425	2 x 1 1/4 x 1 1/2	89.0	61.0	51.0
22428	3 x 3 x 2	11.0	85.0	67.0
22429	3 x 3 x 1 1/2	92.0	69.0	51.0
22430	3 x 3 x 1 1/4	86.6	66.0	51.2
22440	3 x 1 1/2 x 1 1/4	112.7	23.0	69.7

CxCxCx C DOUBLE TY CAST DWV				
BMI#	SIZE	L	H	H1
22457	1 1/4	86.0	79.0	40.0
22458	1 1/2	102.0	84.0	44.0
22459	2	127.6	105.7	63.7
22463	1 1/2 x 1 1/4	103.0	83.0	41.0
22465	2 x 1 1/2	113.4	89.0	53.3
22466	2 x 1 1/4	111.0	82.0	45.0

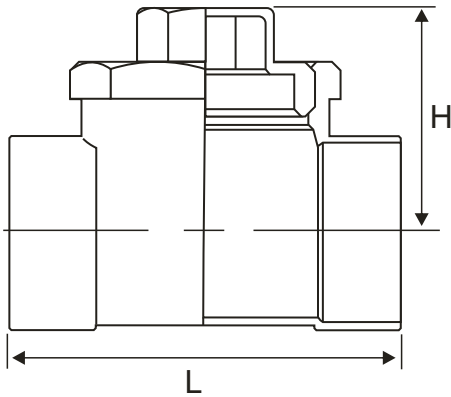
CxCxC Y CAST DWV				
BMI#	SIZE	L	H	L1
22507	1 1/4	82.8	58.5	64.5
22508	1 1/2	91.0	63.3	67.0
22509	2	80.5	42.4	85.0
22511	3	161.0	92.0	133.0

CxCxC Y CAST DWV				
BMI#	SIZE	L	H	L1
22514	1 1/2 x 1 1/4 x 1 1/2	97.0	66.0	72.0
22515	1 1/2 x 1 1/4 x 1 1/4	97.0	66.0	70.0
22516	1 1/2 x 1 1/2 x 1 1/4	89.5	61.9	65.8
22519	2 x 2 x 1 1/2	100.0	68.5	77.1
22520	2 x 2 x 1 1/4	95.0	40.0	70.0
22521	2 x 1 1/2 x 2	110.0	68.0	85.0
22522	2 x 1 1/2 x 1 1/2	87.8	62.4	70.8
22527	3 x 3 x 2	118.0	72.0	90.0
22528	3 x 3 x 1 1/2	108.8	86.0	89.0

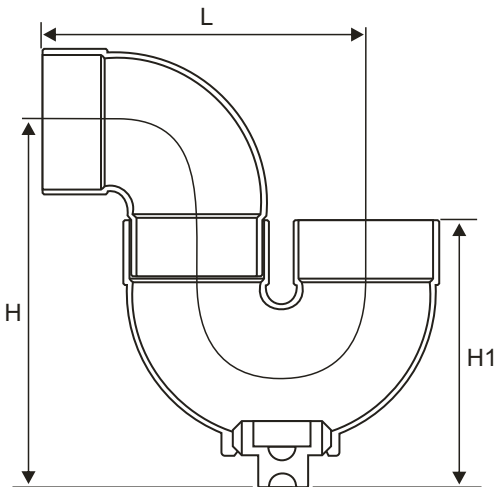
CAST COPPER ALLOY DWV



CxCxCxC DOUBLE Y CAST DWV				
BMI#	SIZE	L	H	L1
22557	1 1/4	110.0	97.0	76.0
22558	1 1/2	129.3	69.3	95.3
22559	2	169.3	90.7	123.5
22565	2 x 1 1/2	159.0	100.0	80.0

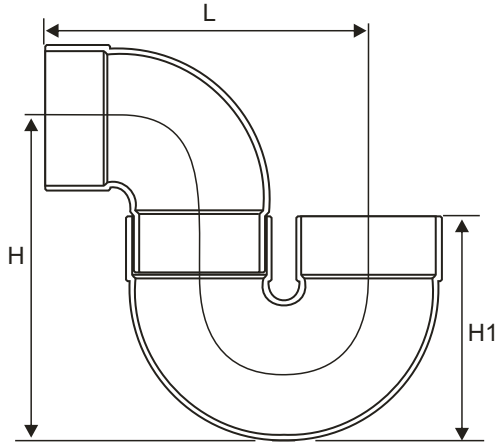


CxC LINE CLEAN-OUT (TEST TEE) CAST DWV			
BMI#	SIZE	L	H
22617	1 1/4	75.0	45.3
22618	1 1/2	85.0	46.6
22619	2	97.0	50.9

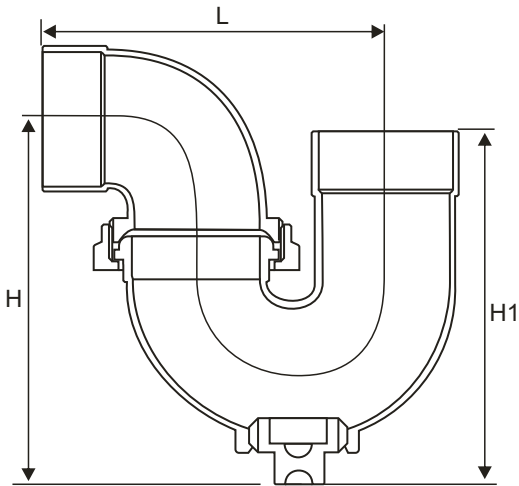


CxC P-TRAP WITH CLEAN-OUT CAST DWV				
BMI#	SIZE	L	H	H1
22667	1 1/4	101.7	118.0	89.0
22668	1 1/2	106.0	118.5	79.9
22669	2	140.5	140.8	90.6

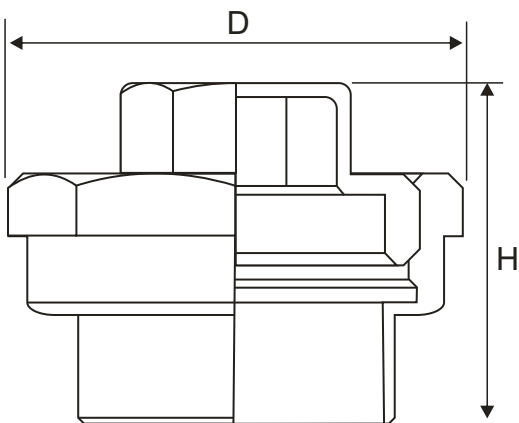
CAST COPPER ALLOY DWV



CxC P-TRAP LESS CLEAN-OUT CAST DWV				
BMI#	SIZE	L	H	H1
22677	1 1/4	101.7	95.0	69.0
22678	1 1/2	106.0	106.3	67.3
22679	2	140.5	135.0	84.8

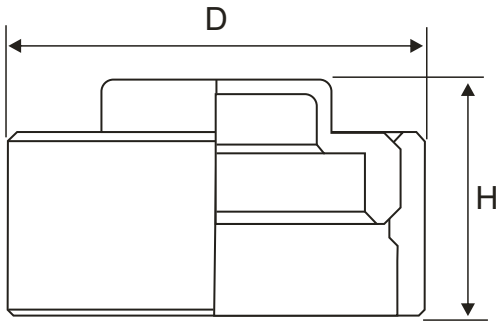


CxC ADJUSTABLE P-TRAP WITH CLEAN-OUT CAST DWV				
BMI#	SIZE	L	H	H1
22698	1 1/2	106.4	120.0	108.9

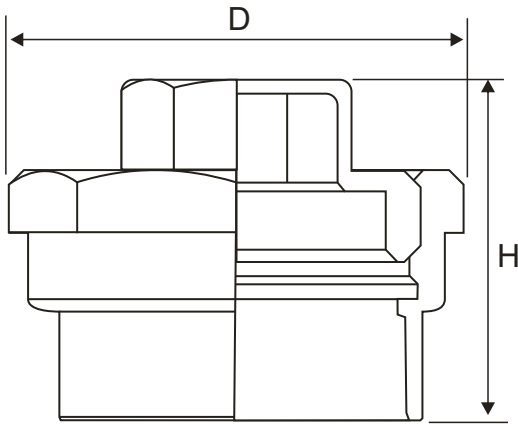


FTG CLEAN-OUT CAST DWV			
BMI#	SIZE	D	H
22607	1 1/4	50.0	55.0
22608	1 1/2	44.0	59.5
22609	2	47.0	73.0
22611	3	98.0	79.0

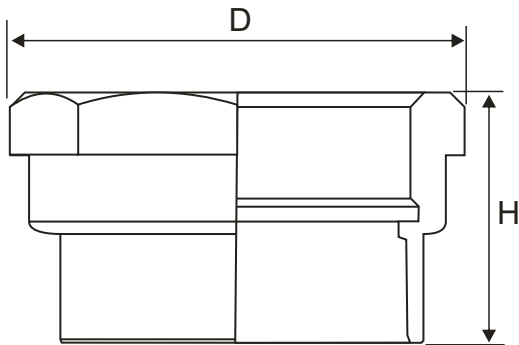
CAST COPPER ALLOY DWV



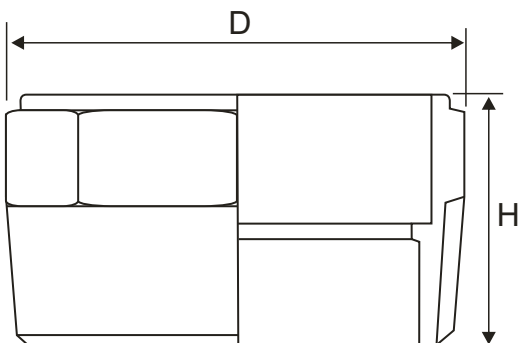
FTG FLUSH CLEAN-OUT CAST DWV			
BMI#	SIZE	D	H
22658	1 1/2x1	25.5	41.3
22659	2x1 1/2	23.7	54.0
22661	3x2 1/2	80.0	37.0



C TUBE END CLEAN-OUT CAST DWV			
BMI#	SIZE	D	H
22717	1 1/4	50.0	52.5
22718	1 1/2	54.0	49.0
22719	2	69.0	50.0
22721	3	101.0	78.0

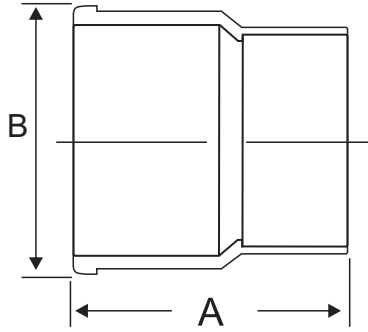


Cx FIPS ADAPTER CAST DWV			
BMI#	SIZE	D	H
22707	1 1/4	50.0	38.0
22708	1 1/2	54.0	34.5
22709	2	68.0	35.0
22711	3	100.0	58.3



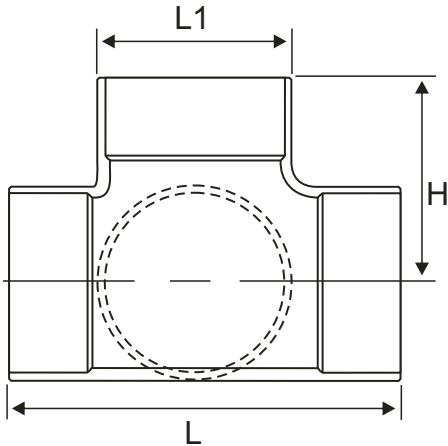
Cx MIPS ADAPTER CAST DWV			
BMI#	SIZE	D	H
22807	1 1/4	27.0	40.0
22808	1 1/2	30.7	50.0
22809	2	33.0	62.5
22811	3	55.5	88.0

CAST COPPER ALLOY DWV

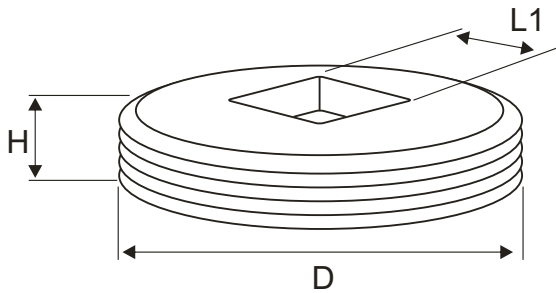


CxM.J. ADAPTER CAST DWV			
BMI#	SIZE	A	B
22854	1 1/2 x 2	58.2	45.0
22855	2	58.2	22.6
22856	3	82.6	26.5

CX SPIGOT FERRULE ADAPTER CAST DWV			
BMI#	SIZE	A	B
22843	2	23.8	63.5
22847	4	107.9	122.2
22844	1 1/2 x 2	45.8	60.9
22852	3 x 2	115.9	117.5

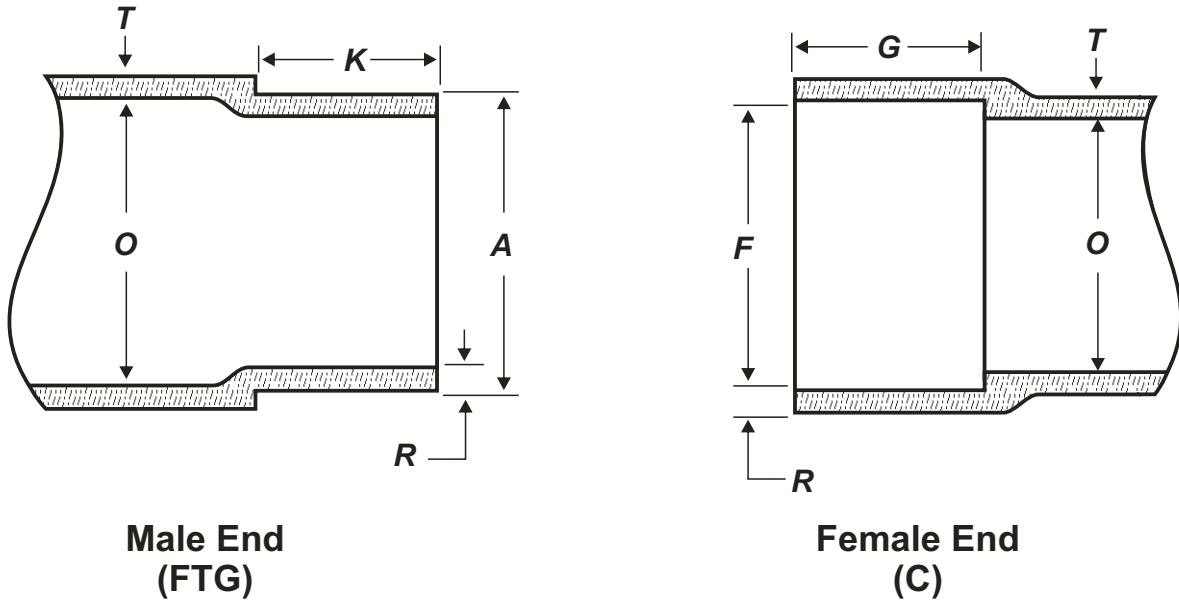


CxCxCxC UTILITY TEE CAST DWV				
BMI#	SIZE	L	L1	H
22469	2	199.0	67.5	65.0



THREADED COUNTERSUNK PLUG DWV				
BMI#	SIZE	D	L1	H
22919	2	59.8	20.4	10.8
22921	3	88.2	29.0	11.9
22923	3 1/2	100.9	24.8	11.7
22922	4	113.5	29.3	11.8
22924	6	167.4	31.2	16.3

CAST COPPER ALLOY DWV



ASME B16.23 Cast Copper Alloy DWV Fittings									
DIMENSIONS OF THE SOLDER JOINT ENDS - DWV									
Nominal Tube Size	Male End			Female End			Metal Thickness		Inside Diameter of Fitting O Note (2) Min.
	Outside Diameter A		Length K Note (1) Min.	Inside Diameter F		Depth G Note (1) Min.	Body T	Joint R	
	Min.	Max.		Min.	Max.				
1 1/4	34.85	37.98	14.22	35.00	35.10	12.70	2.54	1.78	32.77
1 1/2	41.17	41.33	15.75	41.35	41.83	14.22	2.54	2.03	38.86
2	53.87	54.03	17.53	54.05	54.18	15.75	2.54	2.29	51.05
3	79.27	79.43	20.57	79.45	79.53	19.05	3.05	2.54	75.69
4	104.67	104.83	26.92	104.85	104.98	25.40	3.05	3.05	99.82

General note: Dimensions in mm

Notes:

- (1) K dimensions of 11.18, 12.7 and 14.22 mm, and G dimensions of 9.65, 11.18 and 12.7 mm respectively for sizes 1 1/4, 1 1/2 and 2 are sound and acceptable from an engineering standpoint. However, the cup depths specified provide greater latitude in making accurate installations.
- (2) Inside diameter of fitting is based on Type 'M' copper water tube (ASTM B 88).

Complies with:

Materials: ASTM/ASME B62 - Alloy C84400

Dimensions: ASTM/ASME B16.23

Threads: ASTM/ASME B1.20.1