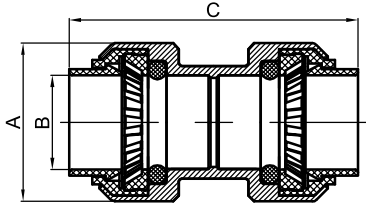
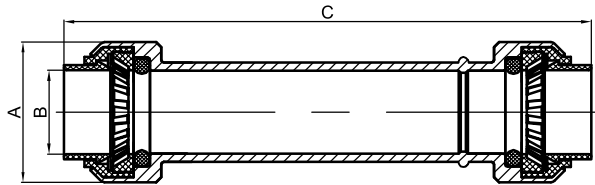


BRASS PUSH-FIT FITTINGS

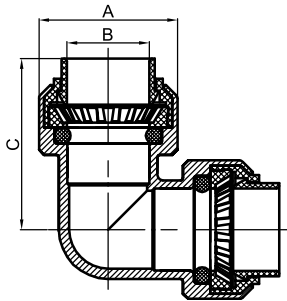


P.F. x P.F. COUPLINGS					
BMI#	Size	A (inch)	B (inch)	C (inch)	Lb
38004	1/2	1.06	0.63	1.97	0.12
38005	3/4	1.35	0.88	2.28	0.20
38006	1	1.66	1.13	2.56	0.31
38007	1 1/4	2.10	1.39	2.91	1.01
38008	1 1/2	2.51	1.64	3.43	1.51
38009	2	3.06	2.14	3.62	2.23

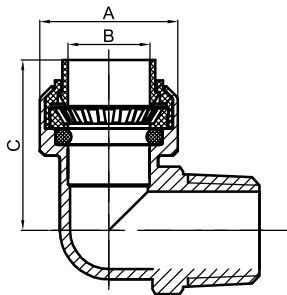


P.F. x P.F. REDUCING COUPLINGS					
BMI#	Size	A (inch)	B (inch)	C (inch)	Lb
38023	3/4 x 1/2	1.35	0.88	2.28	0.03
38027	1 x 3/4	1.66	1.13	2.56	0.30
38031	1 1/4 x 1	2.10	1.39	2.70	0.71
38035	1 1/2 x 1 1/4	2.51	1.64	3.07	1.27
38040	2 x 1 1/2	3.06	2.14	3.41	1.95

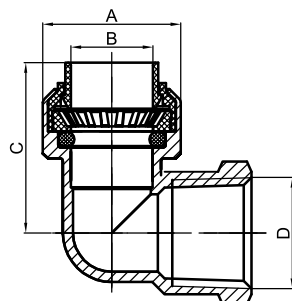
P.F. x P.F. REPAIR COUPLINGS					
BMI#	Size	A (inch)	B (inch)	C (inch)	Lb
38014	1/2	1.06	0.63	4.45	0.20
38015	3/4	1.35	0.88	4.49	0.37
38016	1	1.66	1.13	4.33	0.51



P.F. x P.F. 90° ELBOWS					
BMI#	Size	A (inch)	B (inch)	C (inch)	Lb
38304	1/2	1.06	0.63	1.34	0.24
38305	3/4	1.35	0.88	1.61	0.31
38306	1	1.66	1.13	1.89	0.42
38307	1 1/4	2.10	1.39	2.28	1.28
38308	1 1/2	2.51	1.64	2.63	1.90
38309	2	3.06	2.14	3.01	3.12

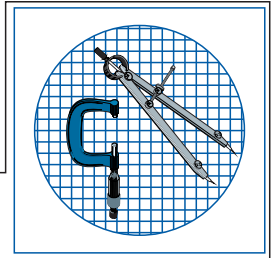


P.F. x P.F. 90° REDUCING ELBOWS					
BMI#	Size	A (inch)	B (inch)	C (inch)	Lb
38323	3/4 x 1/2	1.35	0.88	1.89	0.23

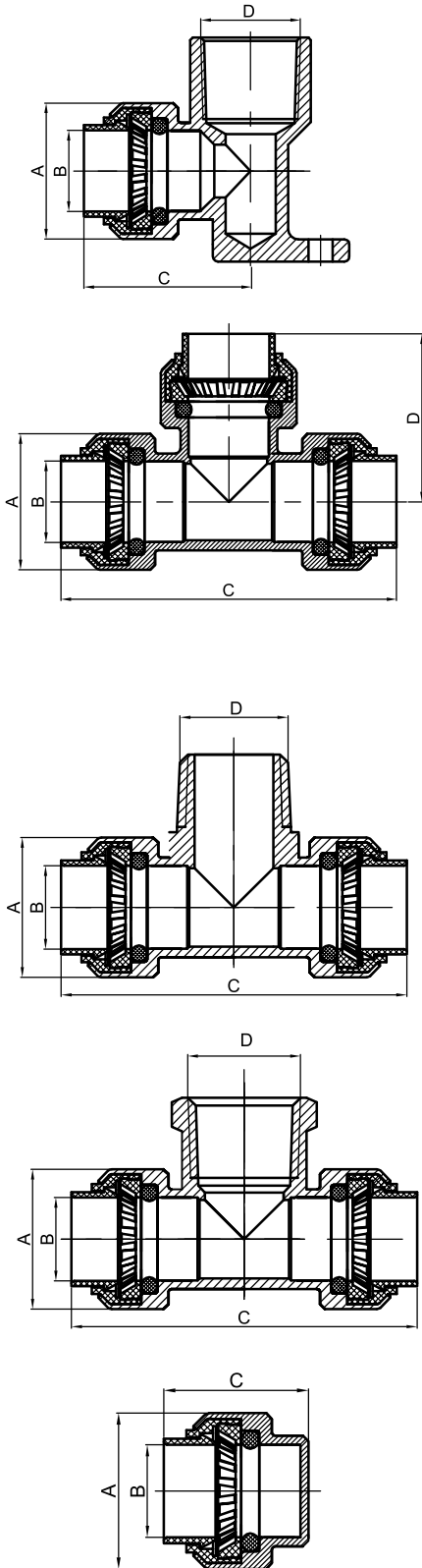


P.F. x MIPS 90° ELBOWS						
BMI#	Size	A (inch)	B (inch)	C (inch)	D (inch)	Lb
38364	1/2	1.06	0.63	1.38	1/2 NPT	0.24
38365	3/4	1.35	0.88	1.57	3/4 NPT	0.31
38366	1	1.66	1.13	1.89	1 NPT	0.42

P.F. x FIPS 90° ELBOWS						
BMI#	Size	A (inch)	B (inch)	C (inch)	D (inch)	Lb
38384	1/2	1.06	0.63	1.38	1/2 NPT	0.24
38385	3/4	1.35	0.88	1.57	3/4 NPT	0.31
38386	1	1.66	1.13	1.89	1 NPT	0.42



BRASS PUSH-FIT FITTINGS



P.F. x FIPS 90° ELBOWS WITH DROPEARS

BMI#	Size	A (inch)	B (inch)	C (inch)	D (inch)	Lb
38399	1/2	1.06	0.63	1.30	1/2 NPT	0.23

P.F. x P.F.x P.F. TEES

BMI#	Size	A (inch)	B (inch)	C (inch)	D (inch)	Lb
38404	1/2	1.06	0.63	2.64	1.34	0.26
38405	3/4	1.35	0.88	3.15	1.61	0.40
38406	1	1.66	1.13	3.78	1.89	0.58
38407	1 1/4	2.10	1.39	4.45	2.20	1.70
38408	1 1/2	2.51	1.64	5.12	2.56	2.98
38409	2	3.06	2.14	5.91	2.95	4.19

P.F. x P.F.x P.F. REDUCING TEES

BMI#	Size	A (inch)	B (inch)	C (inch)	D (inch)	Lb
38419	1/2 x 1/2 x 1	1.06	0.63	3.31	1.44	0.33
38420	1/2 x 1/2 x 3/4	1.06	0.63	3.02	1.70	0.26
38429	3/4 x 3/4 x 1/2	1.35	0.88	2.91	1.61	0.35
38430	3/4 x 1/2 x 3/4	1.35	0.88	3.31	1.65	0.36
38431	3/4 x 1/2 x 1/2	1.35	0.88	2.83	1.50	0.29
38438	1 x 1 x 3/4	1.66	1.13	3.35	1.77	0.49

P.F. x P.F. x MIPS TEES

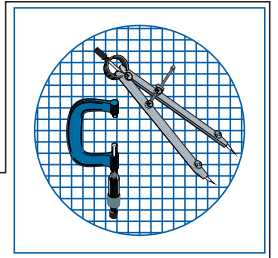
BMI#	Size	A (inch)	B (inch)	C (inch)	D (inch)	Lb
38574	1/2	1.06	0.63	2.68	1/2 NPT	0.20
38575	3/4	1.35	0.88	3.15	3/4 NPT	0.35

P.F. x P.F. x FIPS TEES

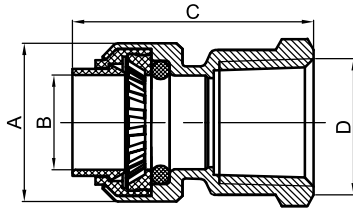
BMI#	Size	A (inch)	B (inch)	C (inch)	D (inch)	Lb
38591	1/2	1.06	0.63	2.68	1/2 NPT	0.20
38592	3/4	1.35	0.88	3.15	3/4 NPT	0.37

P.F. CAPS

BMI#	Size	A (inch)	B (inch)	C (inch)	Lb
38504	1/2	1.06	0.63	1.22	0.07
38505	3/4	1.35	0.88	1.22	0.12
38506	1	1.66	1.13	1.30	0.17
38507	1 1/4	2.10	1.39	1.57	0.55
38508	1 1/2	2.51	1.64	1.77	0.87
38509	2	3.06	2.14	1.94	1.39

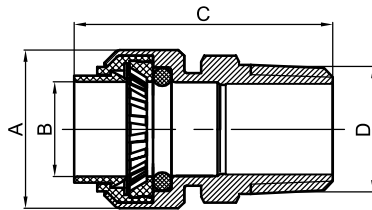


BRASS PUSH-FIT FITTINGS



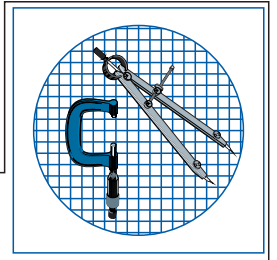
P.F. x FIPS ADAPTERS						
BMI#	Size	A (inch)	B (inch)	C (inch)	D (inch)	Lb
38704	1/2	1.06	0.63	1.62	1/2 NPT	0.13
38705	3/4	1.35	0.88	1.85	3/4 NPT	0.21
38706	1	1.66	1.13	2.11	1 NPT	0.28
38707	1 1/4	2.10	1.39	2.45	1 1/4 NPT	0.83
38708	1 1/2	2.51	1.64	2.63	1 1/2 NPT	1.12
38709	2	3.05	2.14	2.80	2 NPT	1.65

P.F. x FIPS REDUCING ADAPTERS						
BMI#	Size	A (inch)	B (inch)	C (inch)	D (inch)	Lb
38723	1/2 x 3/4	1.06	0.63	1.66	3/4 NPT	0.19

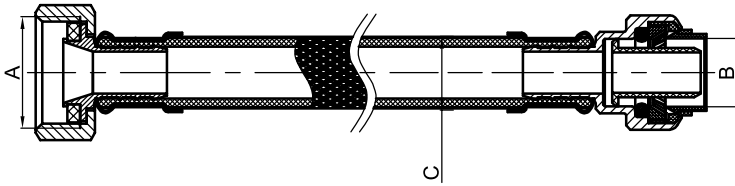


P.F. x MIPS ADAPTERS						
BMI#	Size	A (inch)	B (inch)	C (inch)	D (inch)	Lb
38804	1/2	1.06	0.63	1.73	1/2 NPT	0.13
38805	3/4	1.35	0.88	1.93	3/4 NPT	0.22
38806	1	1.66	1.13	1.99	1 NPT	0.28
38807	1 1/4	2.10	1.39	2.65	1 1/4 NPT	0.80
38808	1 1/2	2.51	1.64	2.86	1 1/2 NPT	1.10
38809	2	3.05	2.14	2.96	2 NPT	1.58

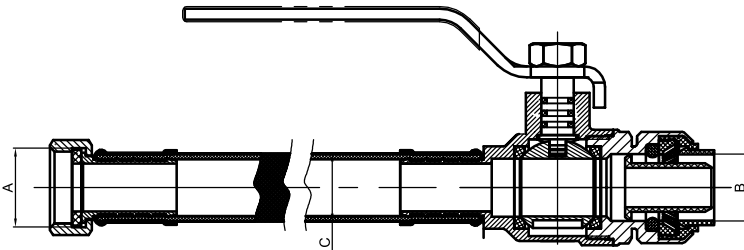
P.F. x MIPS REDUCING ADAPTERS						
BMI#	Size	A (inch)	B (inch)	C (inch)	D (inch)	Lb
38817	1/2 x 3/4	1.06	0.63	1.77	3/4 NPT	0.20



BRASS PUSH-FIT FITTINGS

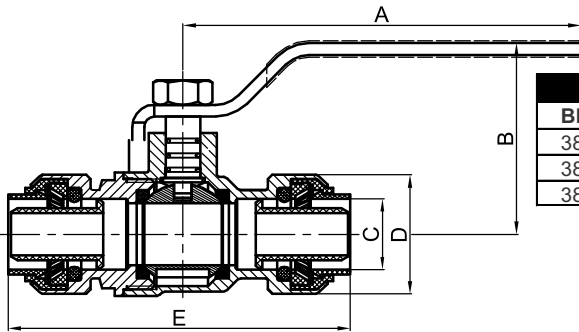


P.F. x FIPS (SWVL) FLEXIBLE S.S. TUBES					
BMI#	Size	A (inch)	B (inch)	C (inch)	Lb
38212	3/4 x 12	3/4 NPT	0.88	1.02	0.55
38215	3/4 x 15	3/4 NPT	0.88	1.02	0.62
38218	3/4 x 18	3/4 NPT	0.88	1.02	0.71
38224	3/4 x 24	3/4 NPT	0.88	1.02	0.79

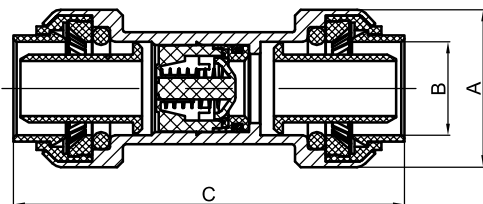


P.F. x FIPS (SWVL) FLEXIBLE S.S. TUBES & VALVES					
BMI#	Size	A (inch)	B (inch)	C (inch)	Lb
38632	1/2 x 3/4 x 12	3/4 NPT	0.63	0.67	0.93
38635	1/2 x 3/4 x 15	3/4 NPT	0.63	0.67	0.97
38638	1/2 x 3/4 x 18	3/4 NPT	0.63	0.67	0.99
38644	1/2 x 3/4 x 24	3/4 NPT	0.63	0.67	1.10
38612	3/4 x 12	3/4 NPT	0.88	1.02	0.99
38615	3/4 x 15	3/4 NPT	0.88	1.02	1.06
38618	3/4 x 18	3/4 NPT	0.88	1.02	1.10
38624	3/4 x 24	3/4 NPT	0.88	1.02	1.23

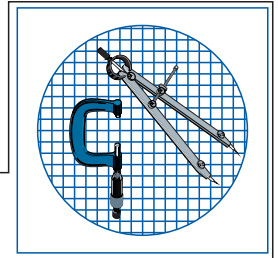
Caution: This product is partially made of reinforced tubing with stainless steel braiding. Premature corrosion caused by elements such as corrosive cleaning products, including chlorine-based ones, has been known to cause ruptures in flexible tubing in the past. The user must ensure that no corrosive products or their vapors come into contact with this product to avoid altering its performance or function, which could cause damage.



P.F. x P.F. BALL VALVES							
BMI#	Size	A (inch)	B (inch)	C (inch)	D (inch)	E (inch)	Lb
38604	1/2	3.64	1.69	0.63	1.06	2.95	0.27
38605	3/4	3.64	1.83	0.88	1.35	3.58	0.54
38606	1	4.17	2.42	1.13	1.66	3.94	0.90



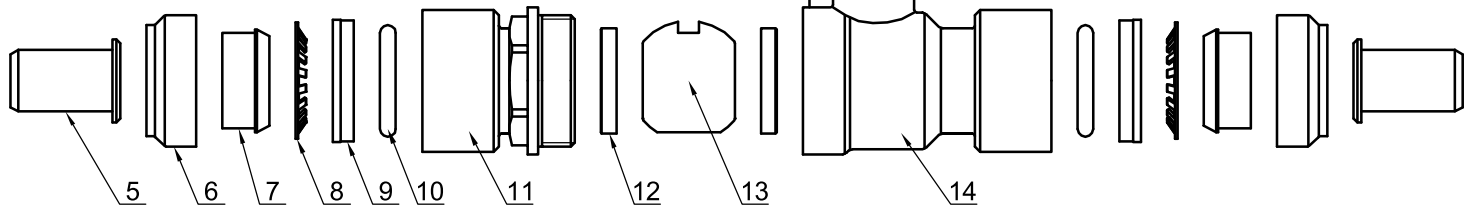
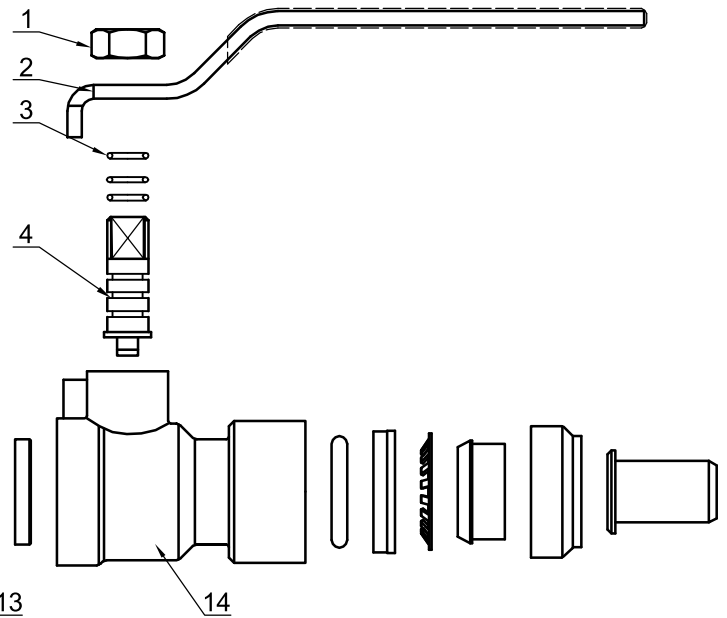
P.F. x P.F. SPRING LOAD CHECK VALVES					
BMI#	Size	A (inch)	B (inch)	C (inch)	Lb
38654	1/2	1.06	0.63	2.76	0.17
38655	3/4	1.35	0.88	3.35	0.29
38656	1	1.66	1.13	3.78	0.55



BRASS PUSH-FIT FITTINGS

LIST OF MATERIALS		
Part	Material	
1	Handle Nut	SUS 304
2	Handle	Q235 Steel
3	O-Ring	EPDM
4	Stem	Brass C46500
5	Stiffener ¹	PSU
6	Seat Ring	POM
7	Push Ring	POM
8	Gripper Ring	SUS 304
9	Lock Ring	POM
10	O-Ring	EPDM
11	Bonnet	Brass C46500
12	Ball Seat	PTFE
13	Ball	Brass C46500
14	Body	Brass C46500

¹ Every push-fit connection includes a stiffener. This should remain in place when using PEX pipe, as it ensures the pipe remains round for a proper seal. When using copper or CPVC, the stiffener may be removed to achieve maximum flow.



Performance:

- Max. Pressure: 200 psi / 1378 kPa
- Max. Temperature: 180° F / 82° C (fluid)
- Flow opening: Full fluid flow (without stiffener inserts)
- Usage:
 - Domestic
 - Commercial
 - Potable water
 - Distribution system
 - Non-combustable gases
 - Hydronic heating system

- Interior installation: With or without an access panel
- Exterior installation: Above or underground (must be protected)
- Material alloy: DZR Forge Brass C46500

Certification (IAPMO):

- Push-Fit: ASSE 1061
- Ball valve: IAPMO/ANSI Z1157
ASME A112, CSA B125
- Drinking water: NSF/ANSI/CAN 61
- Lead content: NSF/ANSI/CAN 372
- Plastic component: NSF/ANSI 14

Warning:

To obtain the performance and limits listed here, you must follow the installation instructions available at the following link.

Installation instructions:

